

Plant i.T.

Process Control Systems. MES inside.

Works with

EcoEtruxure™

Plant Direct iT Maintenance

Fully integrated maintenance solution with a high level of individualization

Efficient maintenance planning is essential to ensure and maintain maximum plant availability. Through its add-on Plant Direct iT Maintenance, ProLeiT offers a compact and parameterizable solution for evaluating and planning all maintenance activities. Individual automation objects, such as valves, motors and frequency inverters, and entire package units, such as compressors, packers or pasteurisation units, can be clearly managed thanks to the intuitively designed solution.

Plant Direct iT Maintenance provides the process industry with real potential for optimisation in several respects: The extensive analysis functions allow maintenance staff to examine the maintenance objects with regard to varying categories, including operating cycles, operating hours or the service cycles defined in each case. Thanks to the add-on, shift supervisors can, at the start of each shift, gain an overview of which maintenance activities have been carried out and which production units need to be maintained/serviced in the near future. Production managers, on the other hand, benefit from greater machine and plant availability and the resulting increase in productivity.

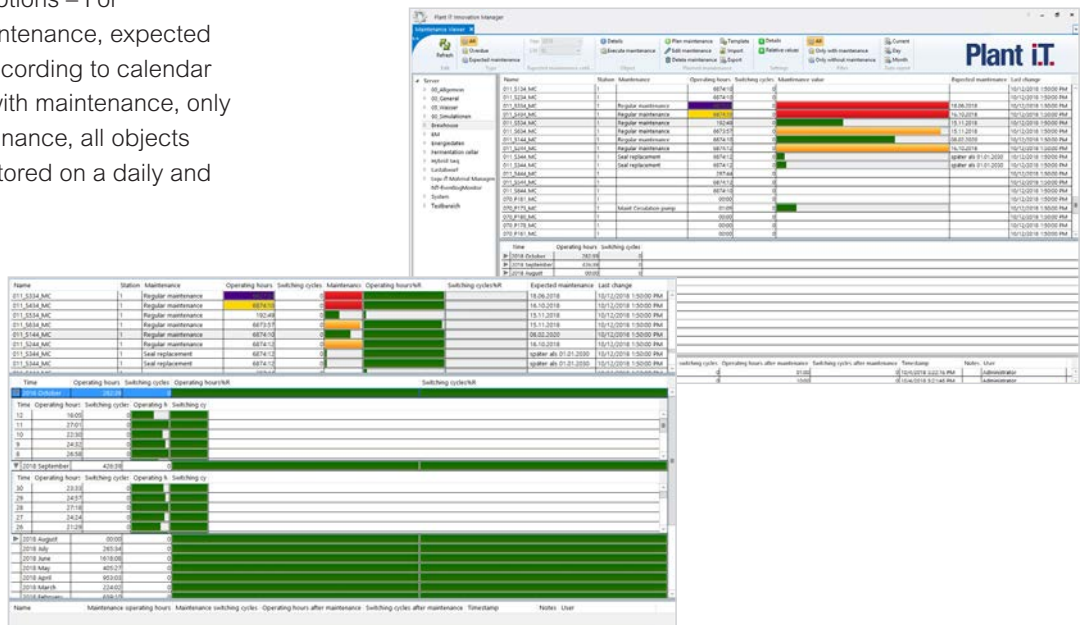
proleit.com

ProLeiT

by **Schneider** Electric

Key functions of Plant Direct iT Maintenance:

- Predictive maintenance – Display of the expected next maintenance date based on collected data
- Extensive analysis options – Evaluation of the frequency and duration of operating cycles, operating hours and specified service cycles. If desired, the database can be exported to Excel. This enables a quick overview of required spare parts and documentation of the completed maintenance activities.
- Quick plausibility check by means of visual support – Deviations can be identified quickly and easily
- Numerous selection options – For example, overdue maintenance, expected maintenance (each according to calendar weeks), only objects with maintenance, only objects without maintenance, all objects
- Maintenance data is stored on a daily and monthly basis
- Clear representation of complex plants/plant components – Multiple maintenance activities can be planned easily and quickly for each object
- Considerable time savings – Due to, e.g., reduced parameterization requirements and the parameterization of maintenance activities via Excel
- Flat data structure and simple data export to external systems (e.g. SAP)



proleit.com

ProLei.T
by Schneider Electric

ProLeiT GmbH
Einsteinstr. 8 | 91074 Herzogenaurach | Germany
Tel: +49 9132 777 0 | Fax: +49 9132 777 150 | info@proleit.com

© 2021 ProLeiT
Plant i.T and brewmaxx are registered trademarks of ProLeiT. Schneider Electric, Microsoft, Qlik, Rockwell Automation, SAP, Siemens, Windows and all other brand names used and not mentioned here are registered trademarks of the respective companies. The information in this document contains general descriptions and performance features that may not always apply to the concrete application case in the specified form or may change to subsequent further development of the different system components. Some of the graphics and images used in this document are just examples and may differ from the delivery status. ProLeiT and all subsidiaries are responsible for system functions and services according to the respective express contractual scope of supply and services only.