



# Plant i.T.

Process Control Systems. MES inside.

Works with

EcoPtruxure™

LINEoptimize – Integrated Line Management System

[proleit.com](http://proleit.com)

**ProLei.T**

by **Schneider** Electric

# More efficiency, less downtime thanks to information-based LMS

Manufacturer-independent and detailed data acquisition – our Line Management System ensures optimized and transparent processes in your plants.

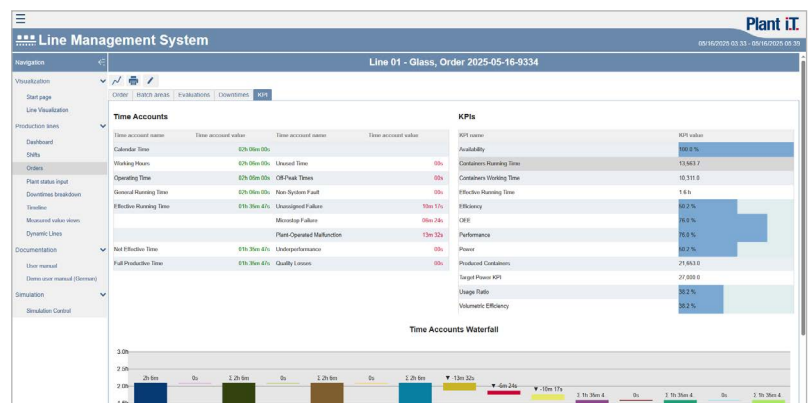
Our LMS, LINEoptimize, can be seamlessly integrated into existing plants and provides all the data needed to ensure smooth processes. It can be employed flexibly wherever machines are arranged in a line.

LINEoptimize is hardware independent and can therefore be incorporated effortlessly into heterogeneous structures. The resulting central system with a standardized user interface ensures increased efficiency, simpler operation, reduced susceptibility to errors and significantly improved data analysis.

The compact solution is used for the precise acquisition, allocation and analysis of fault data – including the often-unrecognizable micro-stops. Operation is quick and easy via the web browsers of the existing workstations.

Key functions of LINEoptimize:

- KPI Engine: Visualization of KPIs and OEE as well as customer-specific calculation



- Dynamic lines: Route and order allocation for flexible line utilization
- Independent order handling of batches for greater throughput
- Electronic shift and order logs – paperless production
- Line-spanning tracking and analysis to identify the causes of downtime



## Sustainable process optimization

As part of Schneider Electric, our mission at ProLeiT is to make a clear and positive contribution to a more sustainable world. This also includes the energy-related performance of our customers. ProLeiT solutions enable operators to make energy flows transparent across their plants, thereby ensuring potential saving opportunities are identified, analyzed and adequately exploited.

# LINEoptimize

The main advantages at a glance



## **Increases efficiency**

Using various time accounts, our Line Management System performs detailed analyses of production times to minimize downtime and to optimize efficiency.



## **All the data at a glance**

LINEoptimize detects deviations quickly, optimizes decision-making processes and calculates KPIs and OEE individually.



## **Improves performance**

LINEoptimize improves work processes, minimizes waiting times and ensures the effective use of staff.



## **Integration**

Our LMS is compatible with all ERP and MES systems, regardless of the hardware being used.



## **Scalability**

The solution adapts effortlessly to various lines and functions.



## **Supports sustainability goals**

Our software identifies inefficient processes and helps reduce both energy consumption and operating costs in a sustainable direction.

## Info

LINEoptimize is available:

- as a standalone solution,
- integrated into an existing Plant iT/brewmaxx system,
- or alongside another process control system.

**We will gladly provide you with advice  
on how to use LINEoptimize  
in your processing plant!**





Visit us on  
[proleit.com](https://proleit.com)

ProLeiT GmbH  
Einsteinstr. 8 | 91074 Herzogenaurach | Germany  
Tel: +49 9132 6430 000 | [info@proleit.com](mailto:info@proleit.com)

© 2025 ProLeiT

Plant iT and brewmaxx are registered trademarks of ProLeiT. Schneider Electric, Microsoft, Qlik, Rockwell Automation, SAP, Siemens, Windows and all other brand names used and not mentioned here are registered trademarks of the respective companies. The information in this document contains general descriptions and performance features that may not always apply to the concrete application case in the specified form or may change to subsequent further development of the different system components. Some of the graphics and images used in this document are just examples and may differ from the delivery status. ProLeiT and all subsidiaries are responsible for system functions and services according to the respective express contractual scope of supply and services only.